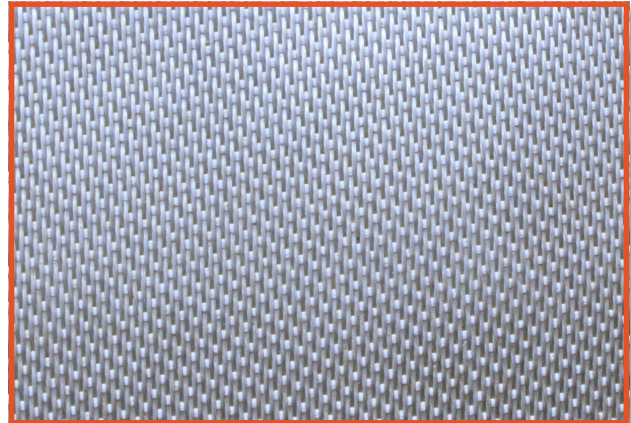


## PS-1800 SILICA DATA SHEET

### Applications

- Pad Fabrics
- Valve Covers
- Curtain Materials
- Welding Curtains
- Damage Control Cloth
- High Temperature Applications



### About the Fabric

Weave	Satin
Coating	Vermiculite
Color	Tan
Thickness	0.028 in +/- 0.002 in
Weight ( oz / yd <sup>2</sup> )	18 oz / yd <sup>2</sup> +/- 10%
Width (in)	70.9 in + 0.8 in / - 0.4 in
Temperature Resistance	1,800°F
Melting Temperature	3,000°F
Content of Main Components	SiO <sub>2</sub> : 95.0% +/- 1.0%
Tensile Strength (lb/in)	Warp: 560 lb / in Weft: 350 lb in

All statements are expressed opinion which we believe to be accurate, reliable, and presented without guarantee or responsibility on our part. The data presented above consists of typical properties and should not be used in preparing specifications. No warranties are expressed or implied and users should test this material thoroughly for their specific application.