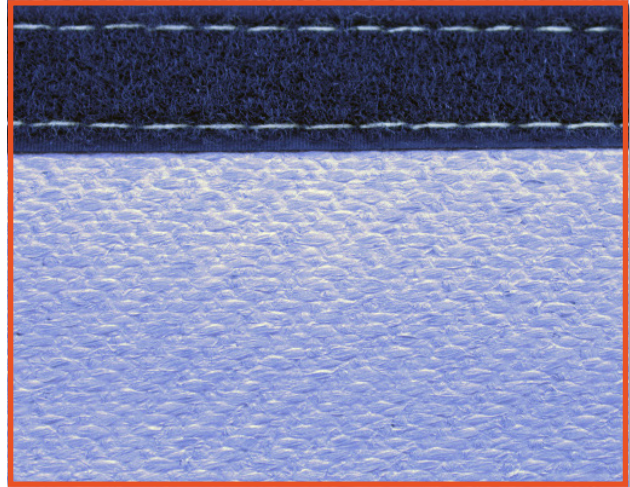


## GR2-SRC FIBERGLASS DATA SHEET

### Applications

- Welding Blankets
- Expansion Joints
- Equipment Covers
- Flange Covers
- Removable Insulation Blankets
- Insulation Sleeves, and Covers To Bundle Wires



### About the Fabric

Weave	Twill
<b>Coating</b>	Special, high temperature silver silicone coating on one side
<b>Weight of Base Fabric</b>	36 oz / yd <sup>2</sup> , +/- 10%
<b>Weight with Coating</b>	45 oz / yd <sup>2</sup> , +/- 10%
<b>Thickness</b>	0.05 in +/- 10%
<b>Temperature Resistance</b>	Silicone Coating 500°F Base Fabric: 1,000°F

All statements are expressed opinion which we believe to be accurate, reliable, and presented without guarantee or responsibility on our part. The data presented above consists of typical properties and should not be used in preparing specifications. No warranties are expressed or implied and users should test this material thoroughly for their specific application.